



This document is one chapter from the EPA “Handbook for Developing Watershed Plans to Restore and Protect Our Waters,” published in March 2008. The reference number is EPA 841-B-08-002. You can find the entire document http://www.epa.gov/owow/nps/watershed_handbook.

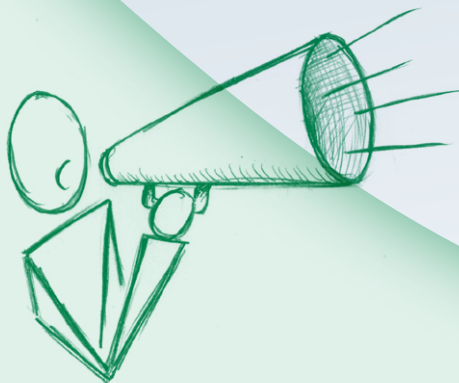
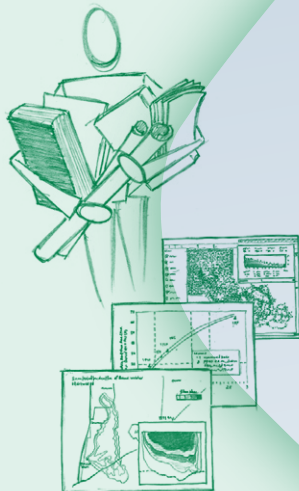
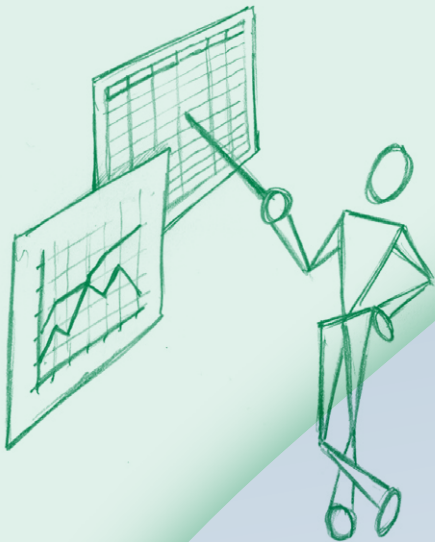
Handbook for Developing Watershed Plans to Restore and Protect Our Waters

Cover, Contents, and Acronyms and Abbreviations

March 2008



Handbook for Developing Watershed Plans to Restore and Protect Our Waters



Disclaimer

This document provides guidance to states, territories, authorized tribes, local governments, watershed organizations, and the public regarding technical tools and sources of information for developing watershed based plans to improve and protect water quality. This document refers to statutory and regulatory provisions that contain legally binding requirements. This document does not substitute for those provisions or regulations, nor is it a regulation itself. Thus, it does not impose legally binding requirements on EPA, states, territories, authorized tribes, local governments, watershed organizations, or the public and may not apply to a particular situation based upon the circumstances. EPA, state, territory, local government, and authorized tribe decision makers retain the discretion to adopt approaches on a case-by-case basis that differ from this guidance. The use of non-mandatory words like “should,” “could,” “would,” “may,” “might,” “recommend,” “encourage,” “expect,” and “can” in this guidance means solely that something is suggested or recommended, and not that it is legally required, or that the suggestion or recommendation imposes legally binding requirements, or that following the suggestions or recommendations necessarily creates an expectation of EPA approval.

Interested parties are free to raise questions and objections about the appropriateness of the application of the guidance to a situation, and EPA will consider whether or not the recommendations in this guidance are appropriate in that situation. EPA may change this guidance in the future.



United States Environmental Protection Agency
Office of Water
Nonpoint Source Control Branch
Washington, DC 20460
EPA 841-B-08-002
March 2008

Handbook for Developing Watershed Plans to Restore and Protect Our Waters

Contents

Acronyms and Abbreviations xiii

Chapter 1. Introduction 1-1

1.1 What Is the Purpose of This Handbook? 1-2

 1.1.1 *How Is This Handbook Different from Other Guides?*. 1-3

 1.1.2 *Who Should Use This Handbook?* 1-3

 1.1.3 *What If We Already Have a Watershed Plan?*. 1-3

1.2 What’s Inside? 1-4

 1.2.1 *Chapter Overviews*. 1-4

 1.2.2 *Appendices and Additional Resources*. 1-5

1.3 How to Use This Handbook. 1-6

Chapter 2. Overview of Watershed Planning Process 2-1

2.1 Why Use a Watershed Approach to Manage Water Resources? 2-2

2.2 Common Features of the Watershed Planning Process. 2-2

 2.2.1 *Watershed Planning Is an Iterative and Adaptive Process* 2-3

 2.2.2 *Watershed Planning Is a Holistic Process*. 2-3

 2.2.3 *Watershed Planning Is Geographically Defined* 2-4

 2.2.4 *Watershed Planning Should Be Integrated with Other Planning Efforts* 2-4

 2.2.5 *Watershed Planning Is a Collaborative and Participatory Process*. 2-5

2.3 Steps in the Watershed Planning and Implementation Process. 2-5

2.4 Watershed Planning for Impaired Waters. 2-7

 2.4.1 *What Are the Most Common Impairments?* 2-7

 2.4.2 *Watershed Planning Where a TMDL Has Been Developed* 2-8

 2.4.3 *Watershed Planning in the Absence of a TMDL* 2-8

2.5 Including Water Quality Standards in Goal Setting 2-11

 2.5.1 *What Are Water Quality Standards and Why Are They Important?*. 2-11

 2.5.2 *How Are Water Quality Standards Set?*. 2-11

2.6 Nine Minimum Elements to Be Included in a Watershed Plan
for Impaired Waters Funded Using Incremental Section 319 Funds. 2-14

Chapter 3. Build Partnerships 3-1

3.1 Why Do I Need Partners? 3-2

3.2 Identify Driving Forces 3-2

 3.2.1 *Regulatory Issues* 3-3

 3.2.2 *Government Initiatives* 3-3

 3.2.3 *Community-Driven Issues* 3-4

3.3 Identify and Engage Stakeholders 3-5

 3.3.1 *Identify Categories of Stakeholders* 3-5

3.3.2	<i>Determine Stakeholders' Roles and Responsibilities</i>	3-6
3.3.3	<i>Provide a Structure to Facilitate Stakeholder Participation</i>	3-7
3.3.4	<i>Identify Stakeholders' Skills and Resources</i>	3-7
3.3.5	<i>Encourage Participation and Involvement</i>	3-8
3.3.6	<i>Initiate Outreach Activities to Build Awareness and Gain Partners</i>	3-9
3.4	Integrate Local, State, Tribal, and Federal Programs into Your Watershed Planning Effort	3-10
3.4.1	<i>Local Programs</i>	3-11
3.4.2	<i>State and Regional Programs</i>	3-13
3.4.3	<i>Tribal Programs and Organizations</i>	3-16
3.4.4	<i>Federal Programs and Organizations</i>	3-17
	Chapter 4. Define Scope of Watershed Planning Effort	4-1
4.1	Why Define the Scope of Your Watershed Planning Effort?	4-2
4.2	Ask Stakeholders for Background Information	4-2
4.3	Identify Issues of Concern	4-2
4.3.1	<i>Draw a Picture</i>	4-4
4.3.2	<i>Take Stakeholders Out into the Watershed</i>	4-6
4.4	Define the Geographic Extent of the Watershed	4-6
4.5	Develop Preliminary Goals	4-8
4.6	Select Indicators to Measure Environmental Conditions	4-9
4.6.1	<i>Select Quantitative Indicators</i>	4-10
4.6.2	<i>Select a Combination of Indicators</i>	4-10
4.7	Link Concerns with Goals and Indicators	4-15
	Chapter 5. Gather Existing Data and Create an Inventory	5-1
5.1	How Do I Characterize My Watershed?	5-2
5.2	Focus Your Data Gathering Efforts.	5-2
5.2.1	<i>Build on Earlier Scoping Efforts</i>	5-3
5.2.2	<i>Consider Stakeholder Goals and Concerns</i>	5-3
5.3	Who Has the Data and What Types of Data Do You Need?	5-3
5.3.1	<i>Local Sources of Information</i>	5-4
5.3.2	<i>State Sources of Information</i>	5-5
5.3.3	<i>Tribal Sources of Information</i>	5-6
5.3.4	<i>Federal Sources of Information</i>	5-6
5.3.5	<i>Data Types</i>	5-6
5.4	Physical and Natural Features	5-8
5.4.1	<i>Watershed Boundaries</i>	5-8
5.4.2	<i>Hydrology</i>	5-11
5.4.3	<i>Topography</i>	5-13
5.4.4	<i>Soils</i>	5-13
5.4.5	<i>Climate</i>	5-14

5.4.6	<i>Habitat</i>	5-14
5.4.7	<i>Fish and Wildlife</i>	5-16
5.4.8	<i>Ecosystems</i>	5-17
5.5	Land Use and Population Characteristics	5-18
5.5.1	<i>Land Use and Land Cover Data</i>	5-18
5.5.2	<i>Land Management Practices</i>	5-22
5.5.3	<i>Demographics</i>	5-24
5.6	Waterbody and Watershed Conditions	5-25
5.6.1	<i>Water Quality Standards</i>	5-25
5.6.2	<i>Water Quality Reports</i>	5-26
5.6.3	<i>Watershed-Related Reports</i>	5-27
5.7	Pollutant Sources	5-29
5.7.1	<i>Point Sources</i>	5-30
5.7.2	<i>Nonpoint Sources</i>	5-31
5.8	Waterbody Monitoring Data	5-33
5.8.1	<i>Water Quality and Flow Data</i>	5-34
5.8.2	<i>Biological Data</i>	5-36
5.8.3	<i>Geomorphological Data</i>	5-36
5.9	Selected Tools Used to Gather, Organize, and View Assessment Information	5-37
5.9.1	<i>Geographic Information Systems</i>	5-37
5.9.2	<i>Remote Sensing Techniques to Collect Land Use/Land Cover Information</i>	5-41
5.10	Create a Data Inventory	5-47
Chapter 6. Identify Data Gaps and Collect Additional Data If Needed		6-1
6.1	How Do I Know If I Have Enough Data to Start My Analysis?	6-2
6.2	Conduct a Data Review	6-2
6.2.1	<i>Identify Data Gaps</i>	6-3
6.2.2	<i>Determine Acceptability of Data</i>	6-4
6.3	Determine Whether New Data Collection Is Essential	6-6
6.4	Design a Sampling Plan for Collecting New Data	6-6
6.4.1	<i>Select a Monitoring Design</i>	6-7
6.4.2	<i>Develop Data Quality Objectives</i>	6-10
6.4.3	<i>Develop Measurement Quality Objectives and Performance Characteristics</i>	6-10
6.4.4	<i>Develop a Quality Assurance Project Plan</i>	6-11
6.4.5	<i>Develop a Plan for Data Management</i>	6-12
6.5	Collect New Data	6-14
6.5.1	<i>Watershed Overview/Visual Assessment</i>	6-14
6.5.2	<i>Physical Characterization</i>	6-15
6.5.3	<i>Geomorphic Assessment</i>	6-16
6.5.4	<i>Hydrologic Assessment</i>	6-17
6.5.5	<i>Water Quality Assessment</i>	6-18

6.5.6	<i>Assessment of Stream Habitat Quality</i>	6-19
6.5.7	<i>Watershed Habitat Assessment</i>	6-20
6.5.8	<i>Biological Assessment</i>	6-22
Chapter 7. Analyze Data to Characterize the Watershed and Pollutant Sources . . .		7-1
7.1	Analyze Data to Identify Pollutant Sources	7-2
7.1.1	<i>Focus Your Analysis Efforts</i>	7-2
7.1.2	<i>Use a Combination of Analysis Types</i>	7-2
7.1.3	<i>Consider Geographic Variations</i>	7-3
7.1.4	<i>Incorporate Stakeholders' Concerns and Observations</i>	7-4
7.2	Analyze Instream and Watershed Data.	7-4
7.2.1	<i>Confirm Impairments and Identify Problems</i>	7-6
7.2.2	<i>Summary Statistics</i>	7-7
7.2.3	<i>Spatial Analysis</i>	7-9
7.2.4	<i>Temporal Analysis</i>	7-9
7.2.5	<i>Other Trends or Patterns</i>	7-10
7.2.6	<i>Stressor Identification</i>	7-12
7.2.7	<i>Visual Assessments and Local Knowledge</i>	7-13
7.3	Evaluate Data Analysis Results to Identify Causes and Sources	7-14
7.3.1	<i>Grouping Sources for Further Assessment</i>	7-15
7.3.2	<i>Time Frame for Source Assessment</i>	7-17
7.4	Summarize Causes and Sources.	7-17
Chapter 8. Estimate Pollutant Loads		8-1
8.1	How Do I Estimate Pollutant Loads?	8-2
8.2	Using Monitoring Data or Literature Values to Estimate Pollutant Loads.	8-3
8.2.1	<i>Using Monitoring Data to Estimate Loads</i>	8-4
8.2.2	<i>Using Literature Values to Estimate Loads</i>	8-5
8.3	Watershed Modeling	8-7
8.3.1	<i>Factors to Consider When Selecting a Model</i>	8-8
8.3.2	<i>Using Watershed Modeling Tools to Evaluate Loads</i>	8-11
8.3.3	<i>Model Selection and Application Process</i>	8-13
8.3.4	<i>What Models Are Available?</i>	8-16
8.3.5	<i>Capabilities of the Selected Models</i>	8-23
8.4	Model Application Process for the Selected Models	8-26
8.4.1	<i>Watershed Delineation</i>	8-27
8.4.2	<i>Land Use Assignment</i>	8-29
8.4.3	<i>Parameter Selection</i>	8-29
8.4.4	<i>Model Testing</i>	8-31
8.4.5	<i>Estimation of Existing Conditions and Baseline Scenarios</i>	8-35
8.5	Presenting Pollutant Loads	8-35
8.5.1	<i>Consider Spatial Scales</i>	8-36

8.5.2	<i>Consider Time Scales</i>	8-36
8.5.3	<i>Next Steps in Developing the Watershed Plan</i>	8-37
Chapter 9.	Set Goals and Identify Load Reductions	9-1
9.1	How Do I Link the Watershed Analysis to Management Solutions?	9-2
9.2	Translate Watershed Goals into Management Objectives	9-3
9.3	Select Environmental Indicators and Targets to Evaluate Management Objectives	9-4
9.4	Determine Load Reductions to Meet Environmental Targets	9-4
9.4.1	<i>Qualitative Linkages Based on Local Knowledge or Historical Conditions</i>	9-6
9.4.2	<i>Mass Balance Approach</i>	9-7
9.4.3	<i>Empirical Relationships</i>	9-7
9.4.4	<i>Statistical or Mathematical Relationships</i>	9-8
9.4.5	<i>Reference Watershed Approach</i>	9-8
9.4.6	<i>Receiving Water Models</i>	9-9
9.5	Focus the Load Reductions	9-12
9.6	Summarize Watershed Targets and Necessary Load Reductions	9-13
Chapter 10.	Identify Possible Management Strategies	10-1
10.1	How Do I Link My Management Strategies to My Goals?	10-2
10.2	Overview of Management Approaches	10-3
10.2.1	<i>Nonpoint Source Management Practices</i>	10-4
10.2.2	<i>Regulatory Approaches to Manage Pollutant Sources</i>	10-6
10.3	Steps to Select Management Practices	10-10
10.3.1	<i>Identify Existing Management Efforts in the Watershed</i>	10-11
10.3.2	<i>Quantify the Effectiveness of Current Management Measures</i>	10-13
10.3.3	<i>Identify New Management Opportunities</i>	10-14
10.3.4	<i>Identify Critical Areas in the Watershed Where Additional Management Efforts Are Needed</i>	10-14
10.3.5	<i>Identify Possible Management Practices</i>	10-15
10.3.6	<i>Identify Relative Pollutant Reduction Efficiencies</i>	10-19
10.3.7	<i>Develop Screening Criteria to Identify Opportunities and Constraints</i>	10-20
10.3.8	<i>Rank Alternatives and Develop Candidate Management Opportunities</i>	10-22
Chapter 11.	Evaluate Options and Select Final Management Strategies	11-1
11.1	How Do I Select the Final Management Strategy?	11-2
11.2	Identify Factors that Influence the Selection of Approaches Used to Quantify Effectiveness	11-3
11.2.1	<i>General Types of Management Practices</i>	11-3
11.2.2	<i>Identify the Types of Indicators You’re Using to Measure Performance</i>	11-4
11.2.3	<i>Consider the Scale of Your Watershed</i>	11-4
11.2.4	<i>Consider the Synergistic Effects of Multiple Practices</i>	11-5
11.3	Select an Approach to Quantify the Effectiveness of the Management Strategies	11-6
11.3.1	<i>Using Literature Values</i>	11-6

11.3.2	<i>Using Models to Assess Management Strategies</i>	11-7
11.3.3	<i>Example Model Applications to Assess Management Strategies</i>	11-18
11.4	Identify Costs and Compare Benefits of Management Practices	11-22
11.4.1	<i>Identify Cost Considerations</i>	11-23
11.4.2	<i>Compare Costs and Effectiveness of Management Practices</i>	11-27
11.5	Select Final Management Strategies	11-29
11.5.1	<i>Decision Process</i>	11-30
11.5.2	<i>Example Procedures for Selecting Final Management Strategies</i>	11-32
Chapter 12. Design Implementation Program and Assemble Watershed Plan		12-1
12.1	What Do I Need to Design My Implementation Program?	12-2
12.2	Develop Information/Education Component	12-2
12.2.1	<i>Integrate I/E Activities into the Overall Watershed Implementation Program</i>	12-2
12.2.2	<i>Develop an I/E Program</i>	12-3
12.3	Establish an Implementation Schedule	12-7
12.4	Develop Interim Measurable Milestones	12-7
12.5	Establish a Set of Criteria to Measure Progress toward Meeting Water Quality Standards and Other Goals	12-8
12.5.1	<i>Schedule for Implementation of Management Measures</i>	12-9
12.5.2	<i>Nature of Pollutants to Be Controlled</i>	12-10
12.6	Develop a Monitoring Component	12-10
12.6.1	<i>Directly Relate Monitoring Efforts to the Management Objectives</i>	12-11
12.6.2	<i>Incorporate Previous Sampling Designs</i>	12-12
12.6.3	<i>Monitor Land Use Changes in Conjunction with Water Quality Monitoring</i>	12-12
12.6.4	<i>Use an Appropriate Experimental Design</i>	12-13
12.6.5	<i>Conduct Monitoring for Several Years Before and After Implementation</i>	12-13
12.6.6	<i>Build In an Evaluation Process</i>	12-14
12.7	Estimate Financial and Technical Assistance Needed and the Sources/Authorities that Will Be Relied on for Implementation	12-14
12.7.1	<i>Identify Funding Sources</i>	12-15
12.7.2	<i>Leverage Existing Resources</i>	12-15
12.7.3	<i>Estimating Costs</i>	12-16
12.7.4	<i>Identify Technical Assistance Needs</i>	12-19
12.7.5	<i>Identify the Relevant Authorities Needed for Implementation</i>	12-19
12.8	Develop the Implementation Plan Basics	12-19
12.9	Develop an Evaluation Framework	12-22
12.9.1	<i>What Parts of Your Program Should You Evaluate?</i>	12-22
12.9.2	<i>Using a Logic Model to Develop an Evaluation Framework</i>	12-23
12.9.3	<i>Evaluation Methods</i>	12-24
12.9.4	<i>Timing of Evaluation</i>	12-25
12.10	Devise a Method for Tracking Progress	12-25

12.11 Putting It All Together 12-27
 12.11.1 *The Final Review* 12-27
 12.11.2 *Make the Plan Accessible to Various Audiences* 12-27

Chapter 13. Implement Watershed Plan and Measure Progress 13-1

13.1 What Do I Do Once I've Developed My Watershed Plan? 13-2
 13.2 Create an Organizational Structure for Implementation 13-2
 13.3 Implement Activities. 13-3
 13.4 Prepare Work Plans. 13-4
 13.5 Share Results 13-4
 13.6 Evaluate Your Program. 13-6
 13.6.1 *Track Progress Against Your Work Plans* 13-8
 13.6.2 *Analyze Monitoring Data*. 13-9
 13.7 Make Adjustments. 13-11
 13.7.1 *Not Meeting Implementation Milestones*. 13-12
 13.7.2 *Not Making Progress Toward Reducing Pollutant Loads*. 13-12
 13.8 A Final Word 13-14

Appendix A: Resources

Appendix B: Worksheets

Appendix C: List of State Nonpoint Source and Watershed Planning Contacts

Glossary

Bibliography

Figures

Figure 2-1.	Steps in the Watershed Planning Process	2-6
Figure 2-2.	Potential Relationships Between TMDLs and Watershed Plans	2-10
Figure 2-3.	Incorporating the Nine Minimum Elements into Your Watershed Plan	2-15
Figure 2-4.	Level of Detail for Watershed Management Plans	2-18
Figure 4-1.	Simplified Conceptual Model	4-4
Figure 4-2.	Simple Conceptual Model Involving Logging Road Construction Effects on Stream Aquatic Life (adapted from USEPA 1998)	4-4
Figure 4-3.	Draft Conceptual Model for Greens Creek, North Carolina	4-5
Figure 4-4.	Evolution of Goals Throughout the Watershed Planning Process	4-8
Figure 5-1.	Example of NRCS Watershed Delineations Within a USGS 8-digit Cataloging Unit	5-9
Figure 5-2.	Examples of Medium-Resolution and High-Resolution NHD	5-12
Figure 5-3.	Example Map Projections	5-39
Figure 5-4.	Example of GIS Datasets at Different Scales	5-40
Figure 5-5.	Example Fields in a Data Inventory	5-48
Figure 6-1.	Excerpt from Spa Creek Proposed Sampling Plan	6-13
Figure 7-1.	Example Graph of Observed Aluminum Concentrations Compared to Water Quality Criteria	7-7
Figure 7-2.	Commonly Used Summary Statistics	7-8
Figure 7-3.	Example Map of Average Total Dissolved Solids Concentration Throughout a Watershed	7-9
Figure 7-4.	Example Graph of Monthly Statistics for Fecal Coliform Bacteria	7-10
Figure 7-5.	Example Load Duration Curve	7-11
Figure 7-6.	Stressor Identification Process	7-12
Figure 7-7.	Long-term Turbidity Levels at Two Stations in Lake Creek, Idaho	7-14
Figure 8-1.	Example of an Application of Export Coefficients to Calculate Pollutant Loads	8-6
Figure 8-2.	Typical Model Evaluation Points	8-31
Figure 8-3.	Sample Calibration Tests for Hydrologic Simulation	8-33
Figure 8-4.	Sample Model Testing Graphic	8-34
Figure 8-5.	Presentation of Annual Sediment Loads (lb/ac) by Subwatershed, San Jacinto, California	8-36
Figure 8-6.	Seasonal Fecal Coliform Bacteria Loads	8-37
Figure 8-7.	Total Sediment Load and Percentages Associated with Each Source	8-37
Figure 9-1.	Process for Identifying Final Watershed Goals and Targets	9-2
Figure 10-1.	Process for Identifying Candidate Management Practices	10-2

Figure 10-2. Percentage of Buffer Area Disturbed and Impaired Waters in the Troublesome Creek Watershed 10-15

Figure 11-1. Evaluate Candidate Management Practices to Select Final Strategies 11-2

Figure 11-2. Using a Spreadsheet Analysis to Evaluate One Management Practice at a Single Site. 11-8

Figure 11-3. Analysis of Multiple Management Practices Using Multiple Indicators 11-20

Figure 11-4. Quantifying the Effectiveness of Stabilization Practices in Reducing Sediment Loads 11-21

Figure 11-5. Quantifying the Effectiveness of Management Practices in Improving Aquatic Habitat 11-22

Figure 11-6. Cost Comparison of Alternative Treatment Trains to Meet Specific Water Quality and Detention Performance Standards. 11-25

Figure 11-7. Example Comparing Construction Cost and Pollutant Loading for Different Urban Land Use Types with Decreasing Levels of Imperviousness 11-28

Figure 11-8. Example Showing Increased Cost per Pound of Total Phosphorus Removed for Urban Land Uses with Highest Levels of Imperviousness. 11-29

Figure 11-9. Evaluation of Stormwater Management Options for the Town of Cary 11-34

Figure 12-1. Logic Model Components 12-24

Figure 12-2. Logic Model Example 12-25

Figure 12-3. Table of Contents from White Oak Creek, Ohio, Watershed Plan 12-28

Figure 13-1. Watershed Report Card for Clermont County, Ohio 13-7

Figure 13-2. Example Adaptive Management Approach Using a Logic Model 13-8

Tables

Table 1-1. Relationship of Chapters to the Watershed Planning Process 1-4

Table 2-1. Top Ten 303(d) List Impairments in the United States (August 14, 2007). 2-7

Table 2-2. Summary of Common Pollutants and Sources. 2-9

Table 4-1. Coal Creek Sediment Loading Indicators and Target Values. 4-9

Table 4-2. Use of Indicators Throughout the Watershed Planning and Implementation Process 4-9

Table 4-3. Example Environmental Indicators Used to Identify Relationships Between Pollutant Sources and Environmental Conditions. 4-11

Table 4-4. Example Indicators Used throughout Watershed Plan Development and Implementation 4-14

Table 4-5. Examples of Performance Indicators That Can Be Used to Develop Targets to Measure Progress in Meeting Watershed Goals. 4-15

Table 5-1. Data Typically Used for Watershed Characterization 5-7

Table 5-2. Sources of GIS Data Available on the Internet. 5-38

Table 5-3. Sample Costs for Purchasing Remote Sensing Products. 5-46

Table 6-1.	Sources and Associated Pollutants	6-18
Table 7-1.	Examples of the Types of Data-related Activities Conducted throughout the Watershed Planning Process	7-3
Table 7-2.	Examples of the Level of Detail and Effort for Typical Types of Data	7-4
Table 8-1.	Example Approaches Used for Estimating Watershed Loads.	8-3
Table 8-2.	Various Levels of Detail for Simulating Runoff	8-12
Table 8-3.	Levels of Detail in Watershed Models	8-13
Table 8-4.	Overview of Several Available Watershed Models	8-17
Table 8-5.	Water Quality Endpoints Supported by the Selected Watershed Models	8-24
Table 8-6.	Land and Water Features Supported by the Selected Watershed Models	8-25
Table 8-7.	Application Considerations of the Selected Watershed Models	8-26
Table 8-8.	Typical Data Needs for Example Models	8-27
Table 8-9.	Examples of Number and Size of Subwatersheds in Modeling Applications	8-28
Table 8-10.	Example Land Use Categories for Watershed Models.	8-29
Table 8-11.	Typical Calibration Options for Selected Example Models	8-32
Table 8-12.	Typical Loading Presentation Categories and Types	8-36
Table 9-1.	Sample Goals Linked to the Sources and Impacts to Define Management Objectives	9-3
Table 9-2.	Examples of Indicators and Targets to Meet Management Objectives	9-5
Table 9-3.	Example Approaches for Linking Indicators and Sources	9-6
Table 9-4.	Overview of Various Receiving Water Models	9-10
Table 9-5.	Examples of Different Scenarios to Meet the Same Load Target.	9-12
Table 10-1.	Examples of Structural and Nonstructural Management Practices.	10-5
Table 10-2.	Existing Programs and Policies Identified in the Mill Creek Subwatershed Communities.	10-11
Table 10-3.	Commonly Used Management Practices for Salinity, Sediment, and Total Dissolved Solids.	10-17
Table 10-4.	Example Management Practice Screening Matrix.	10-20
Table 10-5.	Example Ranking Table to Identify Candidate Management Practices.	10-23
Table 11-1.	Summary of Management Practice Representation Capabilities of the Selected Models.	11-10
Table 11-2.	Summary of Management Practice Simulation Techniques of the Selected Models.	11-11
Table 11-3.	Data Needs for Management Strategy Modeling.	11-13
Table 11-4.	Specialized Models for Analyzing Management Practices	11-14
Table 11-5.	Considerations for Applying Management Practice Unit Cost Measures	11-24

Table 11-6. Example of Discounting Management Practice Cost for Comparison Purposes. 11-27

Table 11-7. Selected Management Techniques for the Muddy Creek Subwatershed, Virgin River TMDL Implementation. 11-32

Table 11-8. Summary of Load Reduction Requirements and Expected Removal Efficiencies for Selected Management Practices for Muddy Creek Subwatershed 11-33

Table 12-1. Example Indicators to Measure Progress in Reducing Pollutant 12-9

Table 12-2. Annualized Cost Estimates for Selected Management Practices from Chesapeake Bay 12-17

Table 13-1. Comparison of Example Parameters in a Hypothetical Watershed Plan and 319 Work Plan. 13-5

Acronyms and Abbreviations

There are dozens of acronyms and abbreviations used throughout this handbook. Refer back to this list to help you navigate through the alphabet soup.

ADB	Assessment Database
ADID	advance identification
AFO	animal feeding operation
AGNPS	Agricultural Non-Point Source model
AnnAGNPS	Annualized Agricultural Non-Point Source model
AIEO	American Indian Environmental Office
ARS	Agricultural Research Service
ASIWPCA	Association of State and Interstate Water Pollution Control Administrators
AU	assessment unit
AVIRIS	airborne visible/infrared imaging spectrometer
AVS	acid-volatile sulfide
BASINS	Better Assessment Science Integrating Point and Nonpoint Sources
BEACH	Beaches Environmental Assessment and Coastal Health
BEHI	Bank Erosion Hazard Index
BLM	[U.S.] Bureau of Land Management
BMP	best management practice
BOR	[U.S.] Bureau of Reclamation
CADDIS	Causal Analysis/Diagnosis Decision Information System
CAEDYM	Computational Aquatic Ecosystem Dynamics Model
CAFO	concentrated animal feeding operation
CBOD	carbonaceous biological oxygen demand
C-CAP	Coastal Change Analysis Program
CCMP	comprehensive conservation and management plan
cfs	cubic feet per second
CH3D IMS	Curvilinear grid Hydrodynamics 3D—Integrated Modeling System
CH3D SED	Curvilinear Hydrodynamics 3D—Sediment Transport

CN	curve number
CNE	curve number equation
CNMP	conservation nutrient management plan
COD	chemical oxygen demand
CRC	Cooperative Research Center
CREM	Council for Regulatory Environmental Modeling
CREP	Conservation Reserve Enhancement Program
CRM	crop residue management
CRP	Conservation Reserve Program
CSC	Coastal Services Center
CSO	combined sewer overflow
CSP	Conservation Security Program
CSREES	Cooperative State Research, Education, and Extension Service
CSTR	continuously stirred tank reactor
CTG	composite theme grid
CTIC	Conservation Technology Information Center
CWA	Clean Water Act
CZARA	Coastal Zone Act Reauthorization Amendments
DEM	digital elevation model
DIAS/IDLMAS	Dynamic Information Architecture System/Integrated Dynamic Landscape Analysis and Modeling System
DLG	digital line graphs
DO	dissolved oxygen
DOI	[U.S.] Department of the Interior
DOT	[U.S.] Department of Transportation
DQO	data quality objective
DRG	digital raster graphic
ECOMSED	Estuary and Coastal Ocean Model with Sediment Transport
EDAS	Ecological Data Application System
EDNA	Elevation Derivatives for National Application

EFDC	Environmental Fluid Dynamics Code
EMAP	Environmental Monitoring and Assessment Program
EMC	event mean concentration
EPA	[U.S.] Environmental Protection Agency
EPIC	Erosion Productivity Impact Calculator
EQIP	Environmental Quality Incentives Program
ESA	Endangered Species Act
ETM	enhanced thematic mapper
FEMA	Federal Emergency Management Agency
FGDC	Federal Geographic Data Committee
FHWA	Federal Highway Administration
FSA	Farm Service Agency
GAP	Gap Analysis Project
GIRAS	Geographic Information Retrieval and Analysis System
GIS	geographic information system
GISPLM	GIS-Based Phosphorus Loading Model
GLEAMS	Groundwater Loading Effects of Agricultural Management Systems
GLLVHT	Generalized, Longitudinal-Lateral-Vertical Hydrodynamic and Transport
GPS	global positioning system
GRP	Grasslands Reserve Program
GSSHA	Gridded Surface Subsurface Hydrologic Analysis
GWLF	Generalized Watershed Loading Functions
HBI	Hilsenhoff Biotic Index
HCP	habitat conservation plan
HEC-6	Hydraulic Engineering Center-Scour and Deposition in Rivers and Reservoirs
HEC-6T	Hydraulic Engineering Center-Sedimentation in Stream Networks
HEC-HMS	Hydraulic Engineering Center-Hydrologic Modeling System
HEC-RAS	Hydraulic Engineering Center-River Analysis System

HSCTM-2D	Hydrodynamic, Sediment and Contaminant Transport Model
HSPF	Hydrologic Simulation Program–Fortran
HUC	hydrologic unit code
IBI	index of biotic integrity
IDEAL	Integrated Design and Evaluation Assessment of Loadings
I/E	information/education
IMP	integrated management practices
IPM	integrated pest management
kg/ha/yr	kilograms per hectare per year
kg/yr	kilograms per year
KINEROS2	Kinematic Runoff and Erosion Model, v2
lb/d	pounds per day
LID	low impact development
LIDAR	light detection and ranging
LSPC	Loading Simulation Program in C++
LULC	land use/land cover
MDC	minimal detectable change
mg/L	milligrams per liter
MINTEQA2	Metal Speciation Equilibrium Model for Surface and Ground Water
MQO	measurement quality objective
MRLC	Multi-resolution Land Characteristics
MS4	municipal separate storm sewer systems
MSGP	multi-sector general permit
MUIR	map unit interpretation record
MUSIC	Model for Urban Stormwater Improvement Conceptualization
MVUE	Minimum Variance Unbiased Estimator
NASA	National Aeronautics and Space Administration
NAWQA	National Water-Quality Assessment
NCDC	National Climatic Data Center
NDVI	normalized difference vegetation index

NED	National Elevation Dataset
NEIPCC	New England Interstate Pollution Control Commission
NEMI	National Environmental Methods Index
NEP	National Estuary Program
NGO	non-governmental organization
NHD	National Hydrography Dataset
NIR	near-infrared
NLCD	National Land Cover Dataset
NLFA	National Listing of Fish Advisories
NOAA	National Oceanic and Atmospheric Administration
NPDES	National Pollutant Discharge Elimination System
NPS	nonpoint source
NRCS	Natural Resources Conservation Service
NRI	National Resources Inventory
NSFC	National Small Flows Clearinghouse
NSI	National Sediment Inventory
NTTS	National TMDL Tracking System
NTU	nephelometric turbidity unit
NWI	National Wetlands Inventory
NWIS	National Water Information System
O&M	operation and maintenance
OMB	[U.S.] Office of Management and Budget
ORSANCO	Ohio River Valley Water Sanitation Commission
OSM	Office of Surface Mining
P8-UCM	Program for Predicting Polluting Particle Passage through Pits, Puddles, and Ponds—Urban Catchment Model
PAH	polycyclic aromatic hydrocarbon
PBMS	Performance-Based Methods System
PCS	Permit Compliance System
PGC-BMP	Prince George’s County Best Management Practice Module

POTW	publicly owned treatment works
PSA	public service announcement
QAPP	quality assurance project plan
QA/QC	quality assurance/quality control
QHEI	Qualitative Habitat Evaluation Index
QUAL2E	Enhanced Stream Water Quality Model
RBP	Rapid Bioassessment Protocol
REMM	Riparian Ecosystem Management Model
RF1	Reach File Version 1
RF2	Reach File Version 2
RF3-Alpha	Reach File Version 3 - Alpha
RMP	resource management plan
RPD	relative percent difference
RSAT	Rapid Stream Assessment Technique
RUSLE	Revised Universal Soil Loss Equation
SAMP	Special Area Management Plan
SAP	sampling and analysis plan
SAR	synthetic aperture radar
SCS	Soil Conservation Service
SDWA	Safe Drinking Water Act
SED3D	Three-dimensional Numerical Model of Hydrodynamics and Sediment Transport in Lakes and Estuaries
SEM	simultaneously extracted metals
SET	Site Evaluation Tool
SLAMM	Source Loading and Management Model
SOP	standard operating procedure
SPARROW	Spatially Referenced Regression on Watershed Attributes
SRF	State Revolving Fund
SSO	sanitary sewer overflow
SSURGO	Soil Survey Geographic Database

STATSGO	State Soil Geographic Database
STEPL	Spreadsheet Tool for Estimating Pollutant Load
STORET	Storage and Retrieval
STORM	Storage, Treatment, Overflow, Runoff Model
SVAP	Stream Visual Assessment Protocol
SWA	source water assessment
SWAP	Source Water Assessment Program
SWAT	Soil and Water Assessment Tool
SWCD	Soil and Water Conservation District
SWCP	soil and water conservation plan
SWMM	Storm Water Management Model
SWP	source water protection
SWPP	source water protection plan
SWPPP	stormwater pollution prevention plan
TCEQ	Texas Commission on Environmental Quality
TDS	total dissolved solids
TIGER	Topologically Integrated Geographic Encoding and Referencing
TKN	total Kjeldahl nitrogen
TM	thematic mapper
TMDL	Total Maximum Daily Load
TOC	total organic carbon
TP	total phosphorus
TSI	Carlson's Trophic Status Index
TSP	technical service provider
TSS	total suspended solids
USACE	U.S. Army Corps of Engineers
$\mu\text{S/cm}$	microsiemens per centimeter
USDA	U.S. Department of Agriculture
USFWS	U.S. Fish and Wildlife Service
USGS	U.S. Geological Survey

USLE	Universal Soil Loss Equation
UTM	universal transverse mercator
VAFSWM	Virginia Field Scale Wetland Model
VFSMOD	Vegetative Filter Strip Model
VSAP	Visual Stream Assessment Protocol
WAMView	Watershed Assessment Model with an ArcView Interface
WARMF	Watershed Analysis Risk Management Framework
WASP	Water Quality Analysis Simulation Program
WATERS	Watershed Assessment, Tracking and Environmental Results System
WATERSHEDSS ..	WATER, Soil, and Hydro-Environmental Decision Support System
WBD	watershed boundary dataset
WCS	Watershed Characterization System
WEPP	Water Erosion Prediction Project
WHP	wellhead protection
WinHSPF	Interactive Windows Interface to HSPF
WMS	Watershed Modeling System
WQS	water quality standard
WRAS	Watershed Restoration Action Strategy
WRDA	Water Resources Development Act
WWTP	wastewater treatment plant