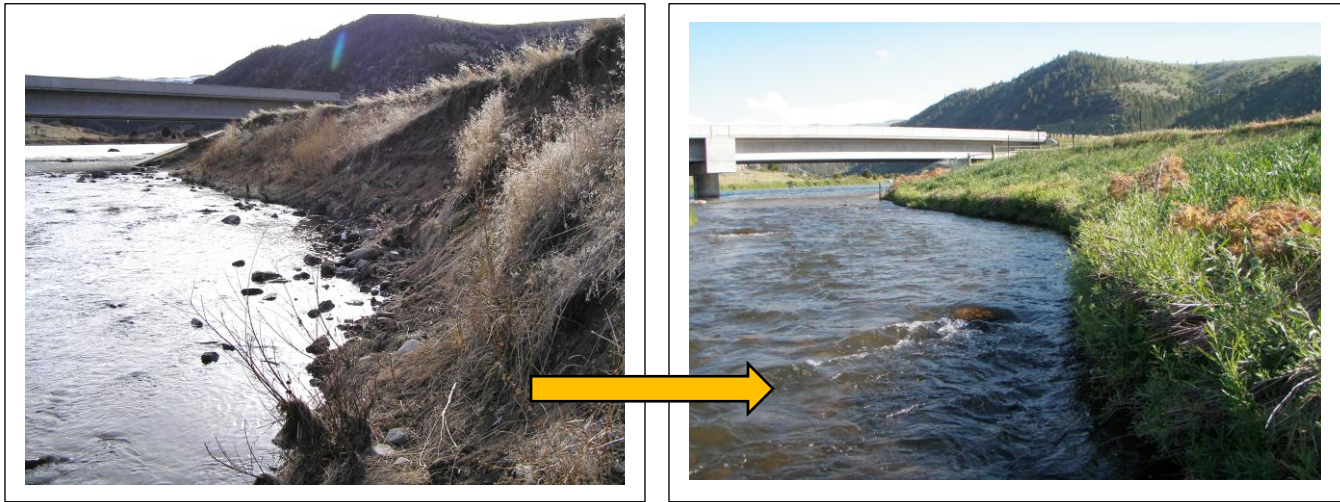


Streambank Revegetation & Bioengineering Workshop

April 3-5, 2017

White Sulphur Springs, Montana



How does a river go from this... to this? Learn firsthand!

The Helena-Lewis and Clark National Forest and Lewis & Clark and Meagher County Conservation Districts are sponsoring a hands-on technical workshop in streambank and soil bioengineering.

The goal of this workshop is to provide attendees a working understanding of

- how streams interact with their banks,
- how bank vegetation affects the likelihood and rate of bank erosion,
- why projects designed to restore streambanks and halt erosion may succeed and/or fail,
- step-by-step, **hand-on instruction** in the design and installation of an actual streambank bioengineering project during the course.

The intended audience for this workshop is landowners, contractors/consultants, conservation organization members and volunteers, Conservation District personnel, and agency personnel with direct permitting or project management authority.

The workshop will be led by Jo Christensen (USFS) and will consist of a half-day classroom session starting at **9:00** the morning of April 3rd the **Meagher County Training Center, 105 W. Crawford in White Sulphur Springs**. The field session will begin the afternoon of the 3rd and will proceed all day through the 4th and 5th. Instruction at the project site will explain site specific considerations and hands-on, step-by-step instruction on how to properly install a bioengineered streambank revegetation or stabilization project.

The workshop is provided free of cost but donations will be accepted to cover the cost of refreshments.

Registration is limited to 25 participants. Please **contact Wayne Green** at wgreen@fs.fed.us prior to registering to confirm space availability. **Registration deadline is March 1st.**

For questions about the workshop content, **contact Jo Christensen** at melissajchristensen@fs.fed.us. For

Streambank Revegetation & Bioengineering Workshop

REGISTRATION FORM & PARTICIPANT INFORMATION

PLEASE COMPLETE THIS FORM AND EMAIL TO wgreen@fs.fed.us

BY MARCH 1, 2017

NAME _____ Phone _____

Agency Affiliation _____ Email _____

Mailing Address _____

IF YOU HAVE SPECIFIC TOPICS OR TECHNICAL QUESTIONS THAT YOU WOULD LIKE COVERED DURING THE WORKSHOP, PLEASE FEEL FREE TO EMAIL THEM IN ADVANCE TO

Jo Christensen at melissajchristensen@fs.fed.us

PARTICIPANT INFORMATION & SCHEDULE

LODGING

A variety of lodging options are available in White Sulphur Springs. No specific lodging has been designated for this workshop. We recommend that you make reservations early to assure availability. If you are travelling from a longer distance, *we highly recommend that you plan to arrive the night before the workshop begins.*

WORKSHOP SCHEDULE

Monday, April 3rd, 0830 a.m. – Noon at the Meagher County Training Center, 205 W Crawford, White Sulphur Springs; 1:00 organize carpool and depart to project site. 4:30-return to White Sulphur Springs.

Tuesday, April 4th: 0900-4:30 at the Jumping Creek project site.

Wednesday April 5th: 0900-3:30 at Jumping Creek project site

RECOMMENDED TO BRING:

- Dress in layers and bring rain gear. Weather could range from cold and snowing to warm spring conditions.
- Bring hip waders or knee boots, sturdy work gloves, eye protection, and hard hat if you have one. Extra safety gear will be available.
- Bring water and lunch each day (snacks and hot beverages will be provided)

WHAT TO EXPECT:

- Parking at the project site is limited and we will be organizing carpooling-recommend that you bring a pack to easily organize and transport your personal gear in a carpool rig
- Installation of a bioengineering project requires a considerable amount of climbing around on streambanks and manual labor. Expect to get dirty and tired (but you will learn a lot and have fun in the process!)
- Classroom time is limited but there will be plenty of opportunities for questions and discussion during installation